

Spiorad na Mara Offshore Wind Farm

Notice to Fishermen

NtM Number	Spiorad na Mara Windfarm/003 v02 Geotech Survey Updates - Ondine Jule mobilisation
Date of Issue	15/11/2023
1 Planned Activity	
<p>Northland Power began geophysical survey works on the 10th May 2023 as part of a scientific data gathering exercise within the proposed Spiorad na Mara Offshore Wind farm. The survey was postponed in some parts of the survey area to allow commercial fisheries activities to resume uninterrupted.</p> <p>The Ondine Jule (vessel details section 5) will continue to carry out geophysical survey works in the survey area (Figure 1) to infill these data gaps now that the seasonal fishing activity has ceased.</p> <p>Operations are scheduled to commenced on the 16th November, with an expected duration of 7 days, weather dependent.</p> <p>The vessel will be displaying the relevant RAM lights and shapes during periods of restricted manoeuvrability and adhere to the International Regulations for the Prevention of Collisions at Sea (COLREGS) and all licencing requirements.</p> <p>An OFLO will be shore based and will monitor the site for commercial fishing activities.</p>	
2 Geographic co-ordinates and chart of survey area <i>All positions quoted in WGS84: latitude /longitude (in degrees decimal minutes)</i>	
See attached figure and list of coordinates.	
3 Safe clearances, navigation safety features and safety notes for mariners	
All vessels are requested to maintain a safe distance (500 m) from the survey vessel at all times. Vessels will display appropriate shapes and lights when surveying.	
4 Outline programme of works	
Start Date: 10/05/2023	Estimated Completion Date: 23/11/2023

5 Vessel details

Vessel Name:	Ondine Jule
Vessel Type / LOA(m):	24.9m
Vessel Function:	Survey Vessel
VHF Call Sign:	EIZH4
MMSI:	250006524
Vessel Operator Contact:	ondinejuleocr@vysusgroup.com


6 Project Contact Details

Company Fisheries Liaison Officer: Richard Joseph (Marine Space) Email: northlandCFLO@erm.com Telephone: 07944 981839 Shore Based Offshore Fisheries Liaison Officer: Scottish Fishermen's Federation Services	Fishing Industry representative: Calum Macleod Email: calumsiarach@hotmail.com
--	---

Figure 1: Spiorad na Mara survey area

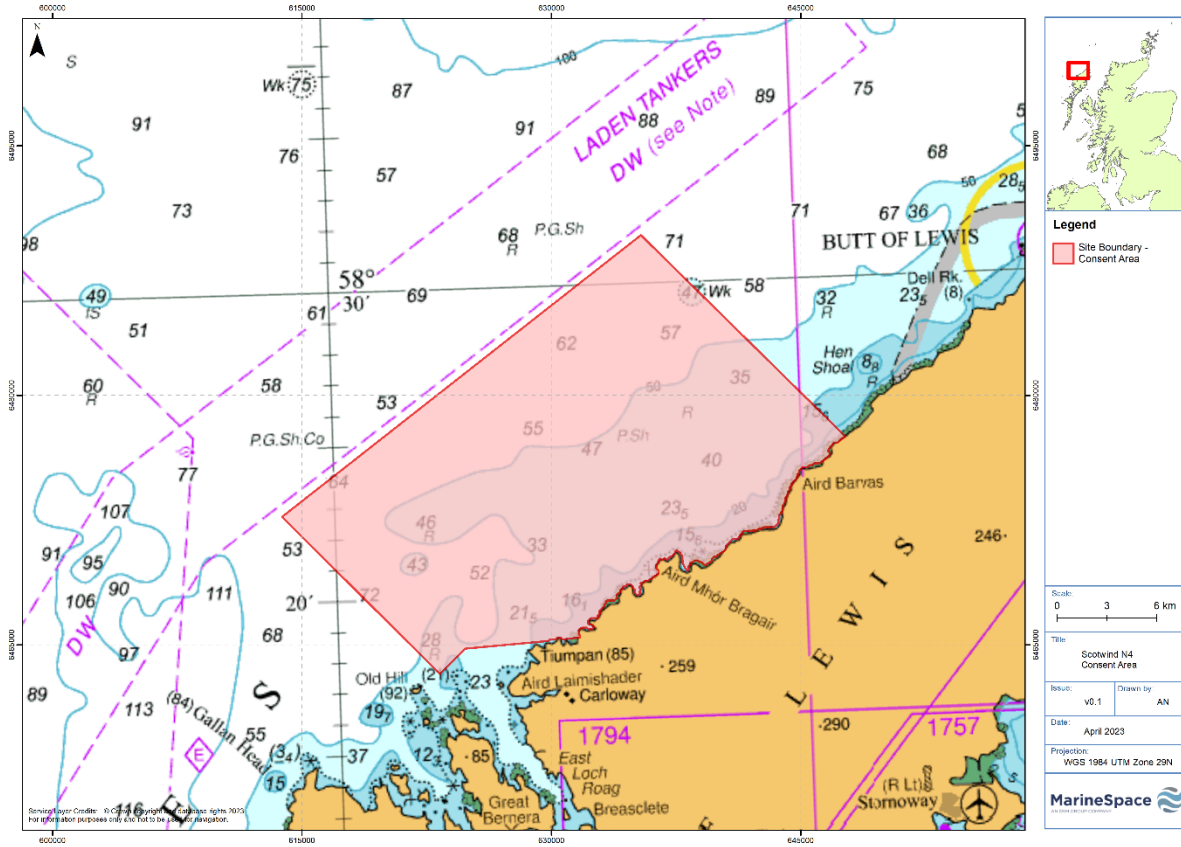


Table 1: Survey area

Point	Latitude (WGS 84)	Longitude (WGS 84)
1	58° 18.613' N	6° 45.124' W
2	58° 18.375' N	6° 52.194' W
3	58° 17.576' N	6° 53.800' W
4	58° 22.815' N	7° 3.242' W
5	58° 31.568' N	6° 40.508' W
6	58° 24.818' N	6° 28.328' W